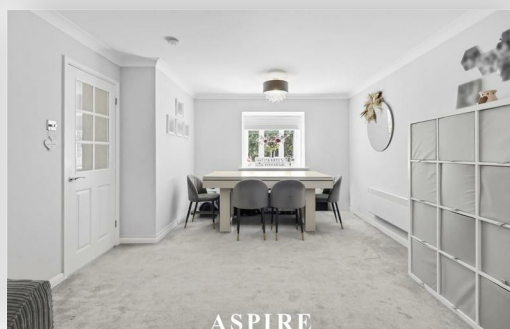


**To arrange a viewing contact us
today on 01268 777400**



Copperfields, Basildon Offers in excess of £220,000

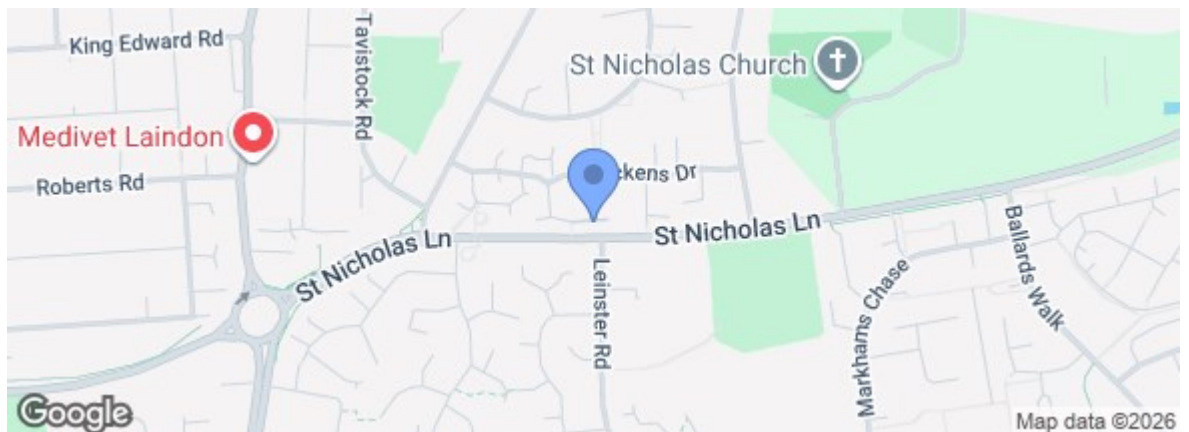
Aspire Estate Agents Basildon are delighted to offer this attractive and well-kept two-bedroom apartment, recently refurbished to a high standard and providing bright, contemporary living throughout. The home boasts a modern fitted kitchen and a sleek bathroom, making it ideal for buyers looking for a property that's ready to move straight into.

The apartment includes two generously sized bedrooms, both offering comfortable and practical living space.

Flooded with natural light, the property enjoys a bright and spacious feel, complemented by its convenient central location. It is perfectly situated for easy access to both Basildon and Laindon, with a variety of local shops, restaurants, and mainline train stations nearby. Major road links including the A13 and A127/A12 are within easy reach, offering excellent routes into London and towards Southend. Basildon Town Centre and Festival Leisure Park are also just a short distance away. Outside, the property benefits from its own allocated parking space, as well as plenty of additional visitor parking.

www.aspireestateagents.co.uk

Energy Efficiency Rating		Current	Potential
Very energy efficient - lower running costs			
(92 plus) A			
(81-91) B			
(69-80) C		78	82
(55-68) D			
(39-54) E			
(21-38) F			
(1-20) G			
Not energy efficient - higher running costs			
England & Wales		EU Directive 2002/91/EC	
Environmental Impact (CO ₂) Rating		Current	Potential
Very environmentally friendly - lower CO ₂ emissions			
(92 plus) A			
(81-91) B			
(69-80) C			
(55-68) D			
(39-54) E			
(21-38) F			
(1-20) G			
Not environmentally friendly - higher CO ₂ emissions			
England & Wales		EU Directive 2002/91/EC	



Under the Property Misdescriptions Act 1991 we make every effort to ensure our sales details are accurate but they are a general outline and do not constitute any part of an offer or contract. Any services, equipment and fittings have not been tested and no warranty can be given as to their condition. We strongly recommend that all the information provided be verified by your advisors and in particular, measurements required for a specific purpose such as fitted furniture or carpets. Please tell us if you have any problems and members of our branches will help either over the phone or in person. A copy of our complaints procedure is available on request. The details are issued on the strict understanding that any negotiations in respect of the property named herein are conducted through Aspire Estate Agents.